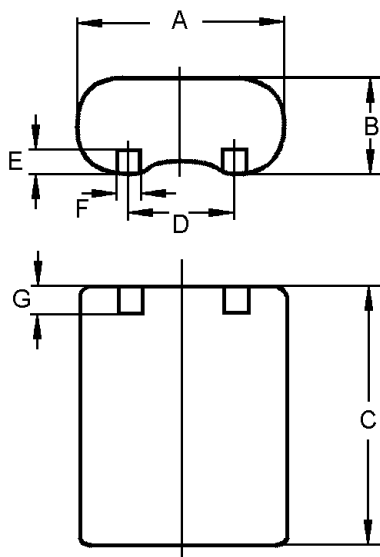


| | |
|-------------------------------|---------------------|
| Type Designation | 6203 |
| Designation IEC | 2CR5 |
| System | Li-MnO ₂ |
| Shelf Life * | 10 years |
| Nominal Voltage [V] | 6 |
| Typical Capacity C [mAh] | 1400 |
| Permissible Temperature Range | - 20 °C ... 70 °C |
| Weight, approx. [g] | 42 |
| Volume [ccm] | 23 |



Dimensions [mm]

min: max:

| | | |
|---|------|------|
| A | 32.5 | 34.0 |
| B | 16.0 | 17.0 |
| C | 43.0 | 45.0 |
| D | 15.7 | 16.3 |
| E | 3.5 | 4.5 |
| F | 3.5 | 4.6 |
| G | 3.5 | 4.5 |

Typical Capacities (at 20°C)

| Discharge Type | Load | End Voltage[V] | 4.4 | 4.0 |
|------------------------------------|--------|----------------|------|------|
| Service Output Test 24H/D, 7D/W | 200 Ω | Time [h] | 50 | 52 |
| | | Capacity [Ah] | 1.37 | 1.43 |
| | | Energy [Wh] | 7.60 | 7.80 |
| Discharge Type | Load | End Voltage[V] | 4.0 | 3.1 |
| Photo Test / Pulse 3s/30s, 7D/W | 900 mA | Time [c] | 1579 | 1686 |
| | | Capacity [Ah] | 1,18 | 1,26 |
| | | Energy [Wh] | 5,79 | 6,11 |

No publication or circulation of data to third parties without consent of VARTA Consumer Batteries

* In consideration of typical loss of capacity at storage and application.